

# CERTIFICATE OF LOCATION OF GOVERNMENT CORNER

NORTH EAST Corner of Section 30, Township 108 N, Range 43 W, 5<sup>th</sup> P.M.  
 STATE OF MINNESOTA, County of MURRAY

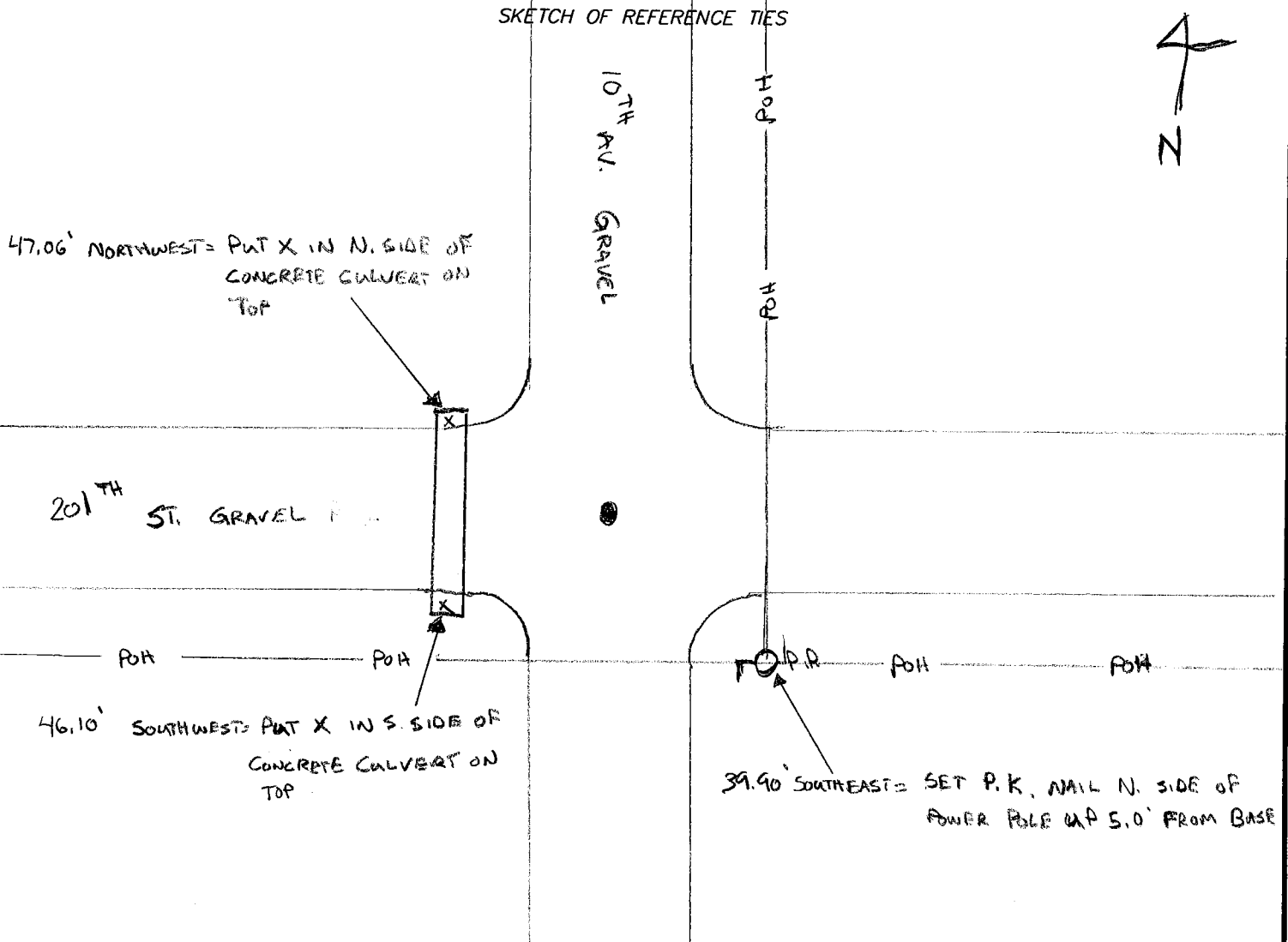
At the corner location shown on the sketch:

On 7/5/07 found a 1/2" CAPPED IRON PIPE # 11943 DOWN 0.3' BELOW SURFACE  
DATE

left monument as found,  lowered monument,  removed monument (explain)

On \_\_\_\_\_ placed a \_\_\_\_\_  
DATE

SKETCH OF REFERENCE TIES



Statement of evidence relative to this corner location is on back of page.

I hereby certify that this document and the data contained herein was prepared by me or under my direct supervision.

[Signature]  
 SIGNATURE

Registration No. 40853

- Land Surveyor,  Professional Engineer
- County Surveyor,  County Engineer

OFFICE OF THE COUNTY RECORDER  
 County of \_\_\_\_\_

I hereby certify that this document was filed in the Co. Recorders office at \_\_\_\_\_ .M. on the \_\_\_\_\_ day of \_\_\_\_\_ A.D., 20\_\_\_\_

County Recorder \_\_\_\_\_

By \_\_\_\_\_, Deputy

DOCUMENT NO. \_\_\_\_\_